

Injury attendances to North Manchester General Hospital Emergency Department

October 2011 to September 2012

This report summarises recorded injury attendances to North Manchester General Hospital Emergency Department (ED) between October 2011 and September 2012.

Between October 2011 and September 2012 there were 33,750 injury attendances to North Manchester General Hospital ED. Males accounted for over half (54%) of all attendances. The month with the highest attendances was March (n=3,316) with December (n=2,362) having the lowest attendances (**Figure 1**). The majority (60%) of attendances were recorded as other injury. Of the specified injury groups, falls (22%) accounted for the highest proportion followed by road traffic collision (RTC) (7%) (**Table 1**).

For all injuries the highest proportion of attendances were for persons aged 5 to 19 (25%) and 20 to 34 years (23%) (**Figure 2**). Over a third (36%) of fall attendees were aged 65 or over. Two-fifths (40%) of deliberate self-harm (DSH) attendees were aged 20 to 34 years (**Figure 3**).

Table 2 shows the location of the incident of injury attendances. Over a half (54%) of injuries occurred in the home. Almost one in seven (14%) injuries occurred in a public place with a smaller proportion occurring at an educational establishment (5%) or at work (4%). Six in ten (62%) falls occurred in the home.

Table 3 shows the ethnicity of attendees to North Manchester General Hospital ED. Over three-quarters (77%) were white, 6% were Pakistani and 4% were black.

The disposal of a patient can give an indication of the severity of the injuries sustained. Six in ten (60%) attendees were discharged, almost three in ten (28%) were referred and 10% were admitted (**Table 4**). Almost eight in ten (77%) RTC attendees were discharged (**Table 5**).

Table 6 shows the arrival method of attendances at North Manchester General Hospital ED. Seven in ten (70%) arrived by private transport while nearly a fifth (19%) arrived by ambulance.

Table 7 presents data for assault attendances to North Manchester ED. Over seven in ten (72%) of assault attendees were male and nearly a half (45%) were aged 20 to 34 years. Nearly a half (45%) of assaults occurred in a public place.

Figure 1: North Manchester General Hospital ED: Total injury attendances by gender and month, October 2011 to September 2012

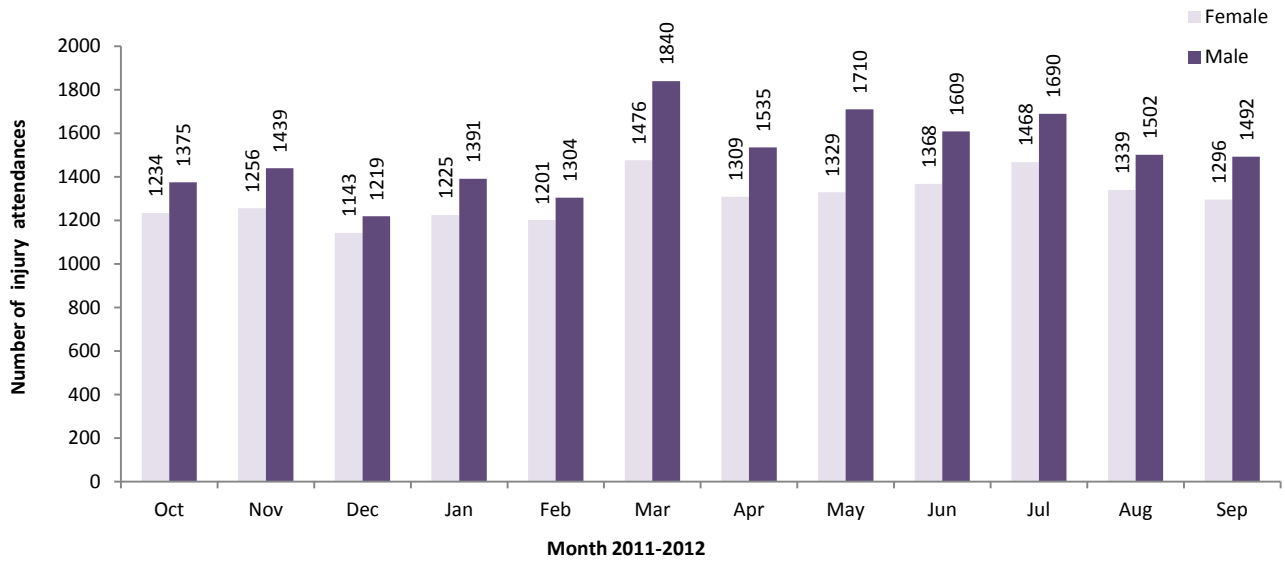


Table 1: North Manchester General Hospital ED: Total injury attendances by injury group and month, October 2011 to September 2012*

Injury group	Oct	Nov	Dec	Jan	Feb	Mar	Apr	May	Jun	Jul	Aug	Sep	Total	%
Other injury	1532	1647	1301	1630	1493	2221	1823	1782	1833	1856	1609	1678	20405	60
Fall	589	564	603	506	595	624	598	676	621	732	677	636	7421	22
RTC	204	191	205	208	177	181	169	216	221	223	207	190	2392	7
Assault	131	165	125	151	128	155	141	171	143	141	142	149	1742	5
Burns and scalds	66	56	68	59	56	44	64	98	64	83	63	61	782	2
Bites and stings	65	49	34	39	36	60	38	71	74	85	113	62	726	2
DSH	22	23	26	23	20	31	11	25	21	38	30	12	282	1
Total	2609	2695	2362	2616	2505	3316	2844	3039	2977	3158	2841	2788	33750	100

*Percentages may not equal 100 due to rounding.

Figure 2: North Manchester General Hospital ED: Total injury attendances by age group and month, October 2011 to September 2012

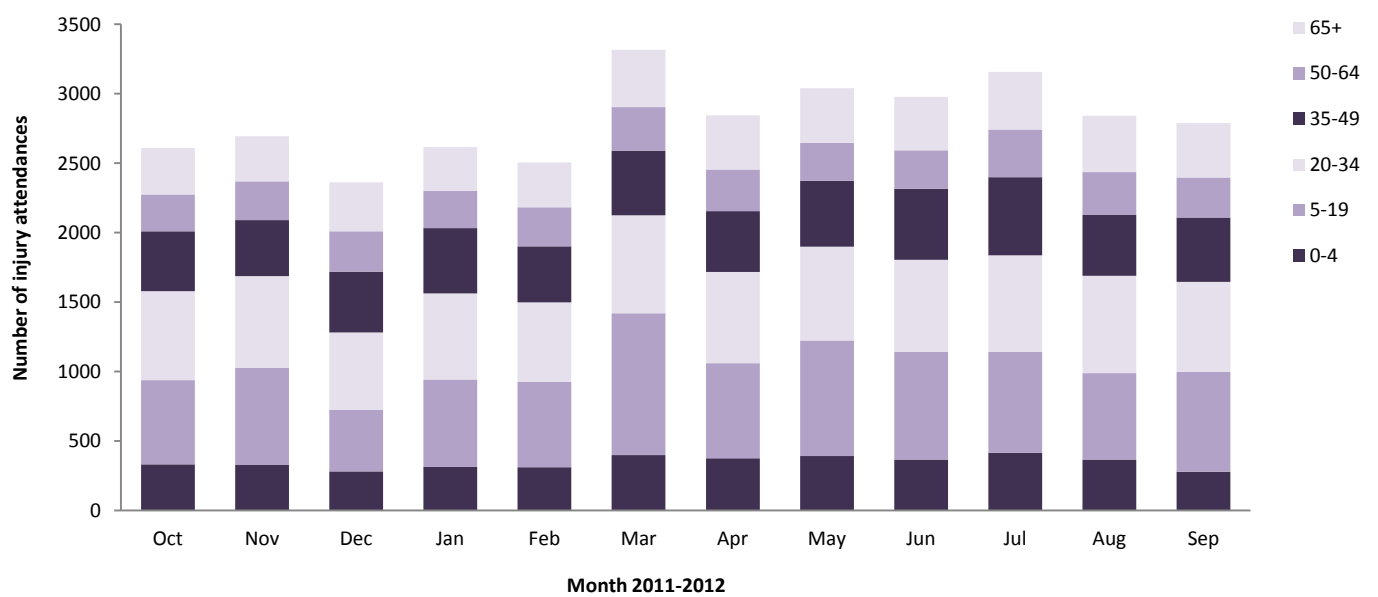


Figure 3: North Manchester General Hospital ED: Total injury attendances by age group and injury group (excluding other injury), October 2011 to September 2012

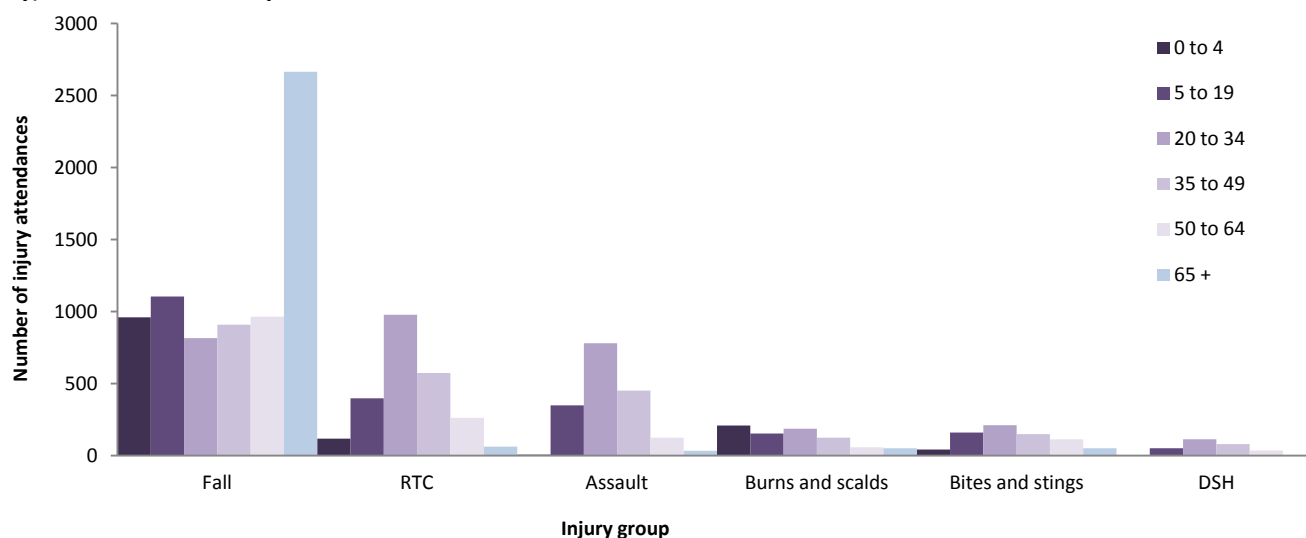


Table 2: North Manchester General Hospital ED: Total injury attendances by location of incident and injury group, October 2011 to September 2012^{1*}

Location	Assault		Bites and stings		Burns and scalds		DSH		Fall		RTC		Other		Total	
	n	%	n	%	n	%	n	%	n	%	n	%	n	%	n	%
Home	429	25	374	52	475	61	205	73	4564	62	241	10	12082	59	18370	54
Other	395	23	107	15	58	7	43	15	684	9	1993	83	3206	16	6486	19
Public place	773	44	165	23	29	4	24	9	1435	19	120	5	2284	11	4830	14
Educational establishment	28	2	***	1	***	1	***	1	268	4	***	0	1279	6	1587	5
Not recorded	37	2	48	7	159	20	7	2	330	4	30	1	659	3	1270	4
Work	80	5	<30	4	<60	7	***	0	140	2	<8	0	895	4	1207	4
Total	1742	100	726	100	782	100	282	100	7421	100	2392	100	20405	100	33750	100

*Percentages may not equal 100 due to rounding.

Table 3: North Manchester General Hospital ED: Total injury attendances by ethnicity and month, October 2011 to September 2012^{2*}

Ethnicity	Oct	Nov	Dec	Jan	Feb	Mar	Apr	May	Jun	Jul	Aug	Sep	Total	%
White	2026	2124	1822	2040	1915	2579	2178	2299	2293	2437	2252	2162	26127	77
Pakistani	161	157	150	157	124	191	201	200	209	225	169	166	2110	6
Not stated	110	97	107	113	120	146	111	146	133	129	117	121	1450	4
Black	96	118	96	103	125	132	119	140	116	119	110	93	1367	4
Any other ethnic group	95	94	96	103	117	136	112	119	108	126	98	120	1324	4
Mixed	55	35	38	37	46	63	54	59	40	51	43	48	569	2
Any other Asian background	38	35	25	30	20	40	37	48	36	26	25	46	406	1
Indian	12	21	15	23	16	16	19	11	26	27	6	12	204	1
Chinese	7	8	10	7	14	6	9	12	6	14	18	12	123	0
Not recorded	***	6	***	***	<7	***	***	***	5	***	***	<6	40	0
Bangladeshi	<8	0	***	***	***	<6	***	***	5	***	***	***	30	0
Total	2609	2695	2362	2616	2505	3316	2844	3039	2977	3158	2841	2788	33750	100

*Percentages may not equal 100 due to rounding.

Table 4: North Manchester General Hospital ED: Total injury attendances by method of disposal and month, October 2011 to September 2012^{3*}

Disposal	Oct	Nov	Dec	Jan	Feb	Mar	Apr	May	Jun	Jul	Aug	Sep	Total	%
Discharged	1669	1687	1528	1581	1503	1943	1625	1957	1838	1847	1625	1604	20407	60
Referral/follow-up	647	753	561	750	720	1037	885	718	796	956	826	865	9514	28
Admitted	249	228	233	247	240	287	302	294	300	306	320	267	3273	10
Other	44	27	40	38	42	49	32	70	43	49	70	52	556	2
Total	2609	2695	2362	2616	2505	3316	2844	3039	2977	3158	2841	2788	33750	100

*Percentages may not equal 100 due to rounding.

¹ Please note that all numbers less than five have been suppressed in line with patient confidentiality and if there is only one number <5 in a category then two numbers will be suppressed at the next level.

² White = Irish, British, other white background; Mixed = white and black, white and Asian, mixed any other; Black = African, Caribbean, other black.

³ Admitted=admitted to hospital/became a lodged patient of the same health care provider; Discharged=discharged - did not require any follow-up treatment; Referral/follow-up =discharged - follow-up treatment to be provided by GP, referred to ED clinic, referred to fracture clinic, referred to other out-patient clinic, referred to other health care professional; Other=died in department, left department before being treated, left department having refused treatment, other.

Table 5: North Manchester General Hospital ED: Total injury attendances by method of disposal and injury group, October 2011 to September 2012*

Disposal	Assault		Bites and stings		Burns and scalds		DSH		Fall		Other injury		RTC		Total	
	n	%	n	%	n	%	n	%	n	%	n	%	n	%	n	%
Discharged	956	55	479	66	322	41	128	45	3917	53	12771	63	1834	77	20407	60
Referral/follow-up	345	20	218	30	386	49	39	14	1711	23	6401	31	414	17	9514	28
Admitted	281	16	19	3	57	7	71	25	1588	21	1149	6	108	5	3273	10
Other	160	9	10	1	17	2	44	16	205	3	84	0	36	2	556	2
Total	1742	100	726	100	782	100	282	100	7421	100	20405	100	2392	100	33750	100

*Percentages may not equal 100 due to rounding.

Table 6: North Manchester General Hospital ED: Total injury attendances by mode of arrival and month, October 2011 to September 2012

Arrival mode	Oct	Nov	Dec	Jan	Feb	Mar	Apr	May	Jun	Jul	Aug	Sep	Total	%
Private transport	1774	1919	1561	1837	1793	2328	1883	2154	2071	2300	1964	2015	23599	70
Ambulance	511	458	519	466	477	538	553	559	576	571	565	541	6334	19
Other	84	71	83	72	74	126	100	98	74	33	95	72	982	3
Not recorded	83	82	70	95	76	63	65	80	62	98	54	55	883	3
Taxi	68	79	57	79	28	63	61	55	82	47	65	38	722	2
Foot	36	35	24	29	23	127	120	46	64	52	36	27	619	2
Public transport	35	37	27	20	19	41	44	20	29	32	34	24	362	1
Police	<17	<13	<22	<15	<14	<29	<17	<25	<19	<23	<26	<15	223	1
Work transport	***	***	***	***	***	***	***	***	***	***	***	***	26	0
Total	2609	2695	2362	2616	2505	3316	2844	3039	2977	3158	2841	2788	33750	100

Table 7: North Manchester General Hospital ED: Total injury attendances and assault attendances by gender, incident location, and age group, October 2011 to September 2012*

	Assaults (n=1,742)	All injuries (n=33,750)
Gender	%	%
Female	29	46
Male	72	54
Location		
Public place	45	14
Home	25	53
Other	23	20
Work	5	***
Educational establishment	***	<6
Not recorded	***	5
Age group		
0 - 4	***	12
5 - 19	20	25
20 - 34	45	23
35 - 49	26	16
50 - 64	7	10
65 plus	***	13

*Percentages may not equal 100 due to rounding

Author: Jennifer Brizell, Published: December 2012

For further information please contact: Val Upton, Centre for Public Health, Research Directorate, Liverpool John Moores University, 2nd Floor, Henry Cotton Building, 15-21 Webster Street, Liverpool, L3 2ET, Tel: 0151 231 4500 or Email: j.s.brizell@ljmu.ac.uk

Website: www.tiig.info (data requests should be made through the website)